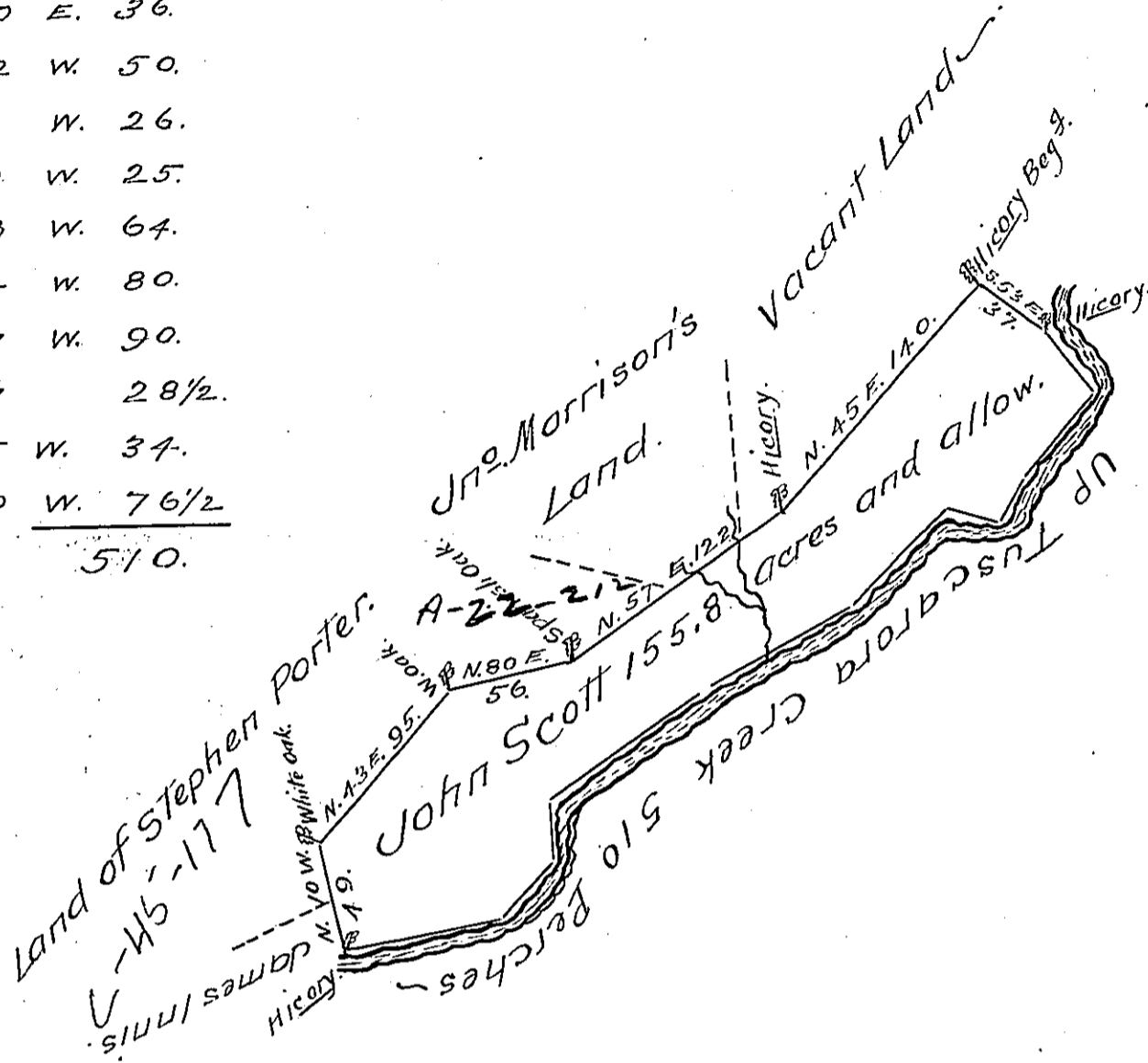


Courses & Distances
up Tuscarora Creek

- S. 40 E. 36.
- S. 42 W. 50.
- S. 33 W. 26.
- N. 70 W. 25.
- S. 48 W. 64.
- S. 64 W. 80.
- S. 57 W. 90.
- SOUTH 28 1/2.
- S. 45 W. 34.
- S. 80 W. 76 1/2
- 510.



The Draught of a Tract of Land called Scotland situate on Tuscarora Creek in the County of Cumberland containing One Hundred Fifty Five Acres 99 Perches with the usual allowance of Six Acres & Cent. for Roads. Survey'd the 24th day of August Anno. Dom. 1767 To John Scott in Pursuance of an Order of Survey Bearing Date at Philad^a. the 16th day of April Anno Dom: 1767 and numbered 3434

J. W^m. Maclay D.S.

To John Lukens Esq. }
S.G. of Pennsylvania }

IN TESTIMONY that the above is a copy of the original remaining on file in the Department of Internal Affairs of Pennsylvania, made conformably to an Act of Assembly approved the 16th day of February, 1833, I have hereunto set my Hand and caused the Seal of said Department to be affixed at Harrisburg, this Twenty seventh day of June 1906.

David Brown
Secretary of Internal Affairs.